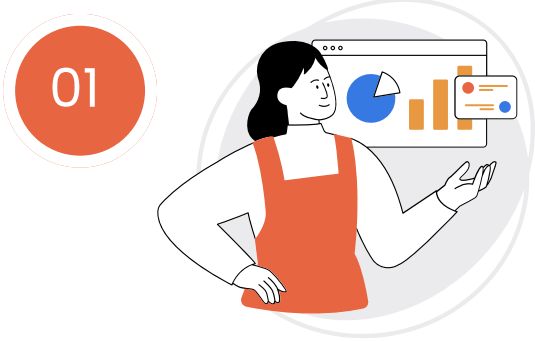


SR&ED ELIGIBILITY: RED FLAG VS GREEN FLAG

How your claim will likely be viewed

DEFINING THE WORK



01

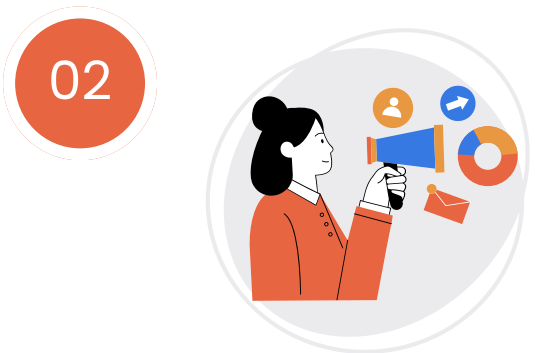
Green Flags:

- Clear technical uncertainty at the start
- Existing solutions were not sufficient

Red Flags:

- Focus on features or outcomes
- "Innovation" without clear uncertainty

PROCESS & INVESTIGATION



02

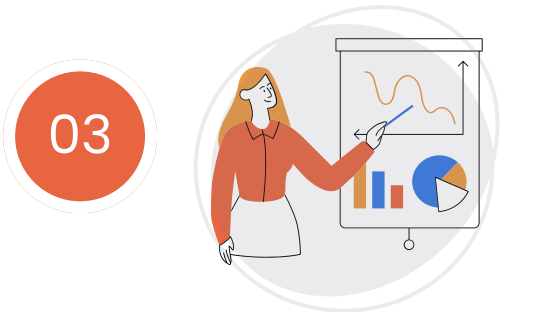
Green Flags

- Structured experimentation
- Clear reasoning behind decisions

Red Flags

- Trial-and-error with no structure
- Activities listed without explanation

DOCUMENTATION



03

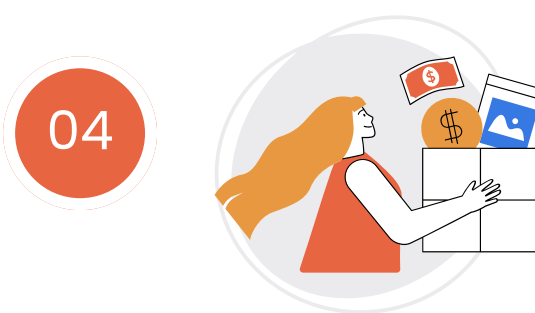
Green Flags

- Real-time records of work and testing
- Evidence of failures and learning

Red Flags

- Reconstructed documentation
- Limited supporting records

FINANCIAL ALIGNMENT



04

Green Flags

- Costs tied directly to SR&ED work

Red Flags

- Broad or unsupported cost claims

QUICK CHECK

- Mostly Green → Likely strong claim
- Mixed → Needs refinement
- Mostly Red → Higher risk

NEXT STEP?

If you're unsure where your project stands, use our SR&ED Eligibility Assessment to get a clearer answer before filing.

